



Commercial Restroom Accessories
A Division of Bobrick



The Value Line

The Value Line



Gamco fulfills a specific niche in the commercial restroom accessories market when budget pricing is the primary consideration. Architects, distributors and developers have counted on Gamco for a comprehensive line of products designed and engineered for long-lasting durability and functionality. There is no better value.

Large Project Focus

ON TIME, ON BUDGET

Gamco's manufacturing capabilities are designed for school, government, retail and other industrial projects. Customers can count on Gamco to meet their delivery requirements for even the largest projects.



InStock

3-DAY SHIPMENTS

Choose from an extensive assortment of the most popular accessory models, and benefit with 3-day shipments within the U. S. from date of order. InStock models can be found at gamcousa.com and are identified with the "IS" symbol throughout this catalog.

Gamco Customer Service

POWERED BY BOBRICK AND IBOB



Best-in-class Bobrick customer service is another reason the construction market relies on Gamco. Customers benefit with the iBob state-of-the-art order entry and tracking system that provides real time information throughout the production, manufacturing and fulfillment process.

Customization

AND SPECIAL FINISHES

Height, width and depth dimensions can be customized for non-standard installations and special short-run quantities can be accommodated. In addition to satin-finish stainless steel, finishes include solid brass and bronze, and powder-coated colors.



Catalog symbols

AND WHAT THEY MEAN



The wheelchair designates accessories that meet ADA Accessibility Guidelines. For a free copy of Bobrick's most up-to-date Planning Guide for Accessible Restrooms, visit bobrick.com.



Many of Gamco's products assist customers in fulfilling their sustainability and LEED objectives. For example, accessories are fabricated of 50%-70% recycled stainless steel. See Gamco's GTB-88 LEED information bulletin.



Products with the InStock symbol ship within three days of receipt of order.

Combination Towel & Waste Units	4-5
Towel Dispensers & Waste Receptacles	6-7
Hand Dryers	8
Mirrors	9
Toilet Tissue Dispensers	10-11
Grab Bars.	12-13
Soap Dispensers.	14
Seat Cover Dispensers	15
Partition-Mounted Units	15
Feminine Hygiene Accessories.	16
Shower Accessories.	17
Healthcare & Security Accessories	18
Restroom Accessories	19
Custodial Accessories	19

Numerical Product Index

22	10	BP-1	18	ND-1.	16	TTD-2	11
23	10	BP-2	18	ND-3.	16	TTD-5	10
100 Series.	12	C-Series	9	ND-4.	16	TTD-6	10
100CH.	17	CG-2.	18	ND-5.	16	TTD-9	10
100CHNR	17	CG-4.	18	ND-6	16	TTD-11	10
100CHSS	17	DR-510	8	NV-2-4.	16	TTD-13	10
100SC-42 x 72	17	DR-5120	8	NV-2-4FS	16	TTD-14	10
100SC-72 x 72.	17	DR-5128.	8	S-5.	19	TW-1.	4
125 Series.	12	DR-570	8	S-6.	19	TW-1-18	4
125 Swing-Up.	12	DR-5708.	8	S-8.	19	TW-1F	4
125 Swing-Up-TPH	12	DR-5750.	8	SPB-1	18	TW-1FS	4
150 Series.	12	DR-578	8	SPH-2	19	TW-3.	4
212	10	FT-Series	9	SR100C	17	TW-3FS	4
212-DBL.	10	G-16AP	14	SR100E	17	TW-6	4
212-SF.	10	G-29 L.	14	SR100SQ	17	TW-8.	5
212-SF-DBL	10	G-58AP	14	SR125C	17	TW-8F.	5
282 25.	16	G-63SD	14	SR125E	17	TW-8FS	5
287	19	G-64LB	14	SR125SQ	17	TW-9.	5
352 25.	16	G-64LB-6	14	TD-2.	6	TW-9-4	5
5181	17	G-64LB-6-US-3.	14	TD-2-8.	6	TW-9F	5
5191	17	G-64LB-US-3	14	TD-3.	6	TW-9FS	5
761	11	G-950FA.	14	TD-4.	6	TW-12RP	5
7673 x 18	17	G-950SA	14	TD-4F	6	TW-12RPF	5
7673 x 24	17	GB-5 Series	13	TD-4FS	6	TW-14RP	5
76737 x 18	17	GB-10 Series	13	TD-5.	6	TW-14RPFS	5
76737 x 24	17	GB-40 Series	13	TD-6.	6	TW-14RP-T	4
7676 x 24	19	GB-50 Series	13	TD-6F	6	TW-14RPFS-T	4
76767 x 24	19	GB-60 Series	13	TD-6FS	6	US-1	19
7680.	17	GB-60S Series	13	TD-11RP	6	US-2	19
76807	17	GB-75 Series	13	TD-11RPT	6	US-5	19
7685.	11	HCS-1	19	TD-12RP.	7	US-6	19
76857	11	HCS-2	19	TD-12RPT	7	US-7	19
7686.	11	HCS-3	19	TSC-1	15	WR-1.	7
76867	11	M-Series	9	TSC-2	15	WR-2.	7
813	11	MC-1	18	TSC-5	15	WR-3.	7
813NRC	11	MC-2.	18	TSC-5F.	15	WR-6	7
814	11	MS-1.	19	TSC-5P.	15	WR-6-6	7
814NRC	11	MS-2.	19	TSC-5PH.	15	WR-6-18.	7
815	11	MS-18	9	TSC-6	15	WR-11	7
816	11	MS-24	9	TSC-6FS	15	WR-12	7
830	11	MSA-1	18	TSC-6P.	15	WR-14	7
A-Series.	9	MSA-11	18	TSC-6PH.	15	WR-15	7
AT 18 x 30.	9	MSA-14	18	TSC-7	15		
BCS-1	19	MSA-18	18	TSC-8	15		
BCS-2	19	MSA-25	18	TTD-1	11		

— Combination Towel & Waste Units —

TW-1

RECESSED
COMBINATION
TOWEL
DISPENSER
AND WASTE
RECEPTACLE



Satin-finish stainless steel, one-piece 22-gauge (0.88mm) flange and removable waste receptacle, 18-gauge (1.2mm) door. Receptacle projects 5" (127mm).

TOWEL CAPACITY: 600 C-fold or 800 multifold

WASTE CAPACITY: 12-gal. (45.4-L)

OVERALL SIZE: 17 1/8" W, 56" H (435 x 1422mm)

TW-1F Semi-recessed 2" (51mm) skirt

TW-1FS Surface-mounted 4" (102mm) skirt

TW-1-18 18-gal. (68-L) waste receptacle

TW-14RP-T

COMBINATION
AUTOMATIC
ROLL TOWEL
DISPENSER
AND WASTE
RECEPTACLE



Satin-finish stainless steel, one-piece 22-gauge (0.88mm) flange and removable waste receptacle, 18-gauge (1.2mm) door. Receptacle projects 5" (127mm).

TOWEL CAPACITY: Accepts paper rolls 7 3/4" (197mm)

wide up to 8" (203mm) dia. 1 1/2" to 2" (38 to 51mm) core

WASTE CAPACITY: 12-gal. (45.4-L)

OVERALL SIZE: 17 1/8" W, 56" H (435 x 1472mm)

TW-14RPF-T Surface-mounted 2" (51mm) skirt

TW-14RPFS-T Surface-mounted 4" (102mm) skirt

TW-3

RECESSED
COMBINATION
MINI-TOWEL
DISPENSER
AND WASTE
RECEPTACLE



Satin-finish stainless steel, one-piece 22-gauge (0.8mm) flange and removable waste receptacle.

TOWEL CAPACITY: 350 C-fold or 475 multifold

WASTE CAPACITY: 2-gal. (7.6-L)

OVERALL SIZE: 14" W, 28" H, 4" D (356 x 711 x 102mm)

TW-3FS Surface-mounted 4" (102mm) skirt

TW-6

RECESSED
COMBINATION
DISPENSER
AND WASTE
RECEPTACLE



Satin-finish stainless steel, one-piece 22-gauge (0.8mm) flange and removable 24-gauge (0.6mm) waste receptacle, 18-gauge (1.2mm) door.

TOWEL CAPACITY: 700 C-fold, 900 multifold or 1200 single-fold

WASTE CAPACITY: 7 1/2 -gal. (28.4-L)

OVERALL SIZE: 14" W, 58" H, 6" D (356 x 1473 x 152mm)

TW-8

RECESSED
COMBINATION
COVERALL
MINI-TOWEL
DISPENSER
AND WASTE
RECEPTACLE



Satin-finish stainless steel, one-piece 18-gauge (1.2mm) door fitted with tumbler lock. Removable molded plastic waste receptacle.

TOWEL CAPACITY: 300 C-fold or 400 multifold

WASTE CAPACITY: 2-gal. (7.6-L)

OVERALL SIZE: 14" W, 28" H, 4 1/4" D (356 x 711 x 108mm)

TW-8F Semi-recessed 2" (51mm) skirt

TW-8FS Surface-mounted 4" (102mm) skirt

TW-9

RECESSED
COMBINATION
COVERALL
TOWEL
DISPENSER
AND WASTE
RECEPTACLE



Satin-finish stainless steel, one-piece 18-gauge (1.2mm) door fitted with two tumbler locks. Push door covers disposal opening. Removable molded plastic waste receptacle. Recessed 5 3/8" (135mm).

TOWEL CAPACITY: 600 C-fold, 800 multifold or 1100 single-fold

WASTE CAPACITY: 5 1/2-gal. (19-L)

OVERALL SIZE: 13" W, 55 1/8" H, 6" D (330 x 1400 x 152mm)

TW-9F Semi-recessed 2" (51mm) skirt

TW-9FS Surface-mounted 6" (152mm) skirt

TW-9-4 Fully recessed 4" (102mm) walls with no-push door. 3 1/2-gal. (13.3-L) waste

TW-12RP

RECESSED
COMBINATION
COVERALL
ROLL TOWEL
PUSH BAR
DISPENSER
AND WASTE
RECEPTACLE



Satin-finish stainless steel, one-piece 18-gauge (1.2mm) door fitted with two tumbler locks and removable waste receptacle. Towels are dispensed when lower bar is pushed.

TOWEL CAPACITY: Rolls 7 3/4" (197mm) wide up to 8" (203mm) dia.

WASTE CAPACITY: 8 1/2-gal. (32-L)

OVERALL SIZE: 16 1/16" W, 43 7/8" H, 9 5/8" D (408 x 1114 x 244mm)

TW-12RPF Semi-recessed 6" (150mm) skirt

TW-14RP

RECESSED
COMBINATION
ROLL TOWEL
DISPENSER
AND WASTE
RECEPTACLE



Satin-finish stainless steel, one-piece 22-gauge (0.8mm) flange and removable waste receptacle, 18-gauge (1.2mm) door. Receptacle projects 5" (127mm). Towels are dispensed when lower bar is pushed.

TOWEL CAPACITY: Roll 7 3/4" (197mm) wide up to 8" (203mm) dia.

WASTE CAPACITY: 12-gal. (45.4-L)

OVERALL SIZE: 17 1/8" W, 56" H (435 x 1422mm)

TW-14RPFS Surface-mounted 4" (102mm) skirt

Towel Dispensers & Waste Receptacles

TD-2 SURFACE-MOUNTED TOWEL DISPENSER



Satin-finish stainless steel, 22-gauge (0.8mm). Cabinet slots on sides indicate paper towel supply.

TOWEL CAPACITY: 400 C-fold or 525 multifold

OVERALL SIZE: 10 13/16" W, 14 1/16" H, 3 15/16" D (275 x 355 x 100mm)

TD-2-8 10 13/16" W, 7 1/8" H, 3 15/16" D (275 x 180 x 100mm)

TD-3 RECESSED TOWEL DISPENSER



Satin-finish stainless steel, one-piece 22-gauge (0.8mm) flange, 18-gauge (1.2mm) door.

TOWEL CAPACITY: 600 C-fold or 800 multifold

OVERALL SIZE: 14" W, 28" H, 4 1/4" D (356 x 711 x 108mm)

TD-4 RECESSED TOWEL DISPENSER



Satin-finish stainless steel, one-piece 22-gauge (0.8mm) flange, 18-gauge (1.2mm) door.

TOWEL CAPACITY: 350 C-fold or 475 multifold

OVERALL SIZE: 12 3/4" W, 17 1/8" H, 4 1/4" D (324 x 435 x 108mm)

TD-4F Semi-recessed 2" (51mm) Skirt
TD-4FS Surface-mounted 4" (102mm) Skirt

TD-5 SURFACE-MOUNTED SINGLE FOLD TOWEL DISPENSER



Satin-finish stainless steel, 22-gauge (0.8mm). Cabinet slots on sides indicate paper towel supply.

TOWEL CAPACITY: 400 singlefold

OVERALL SIZE: 11 1/2" W, 7 1/2" H, 6" D (292 x 191 x 152mm)

TD-6 RECESSED COVERALL TOWEL DISPENSER



Satin-finish stainless steel, one-piece 18-gauge (1.2mm) door fitted with tumbler lock.

TOWEL CAPACITY: 300 C-fold or 400 multifold

OVERALL SIZE: 12 11/16" W, 17 1/4" H, 4 1/4" D (322 x 438 x 108mm)

TD-6F Semi-recessed with 2" (51mm) skirt
TD-6FS Surface-mounted with 4" (102mm) skirt

TD-11RP SURFACE-MOUNTED PUSH BAR ROLL TOWEL DISPENSER



Satin-finish stainless steel, 22-gauge (0.8mm) cabinet, 18-gauge (1.2mm) door. Towels are dispensed when lower bar is pushed.

TOWEL CAPACITY: 7 3/4" - 8" W (197 - 203mm), 8" (203mm) in dia.

OVERALL SIZE: 12 1/16" W, 16" H, 9 3/8" D (320 x 406 x 238mm)

TD-11RPT Surface-mounted automatic touchless roll paper towel dispenser

Towel Dispensers & Waste Receptacles

TD-12RP

SEMI-RECESSED ROLL TOWEL DISPENSER



Satin-finish stainless steel, one-piece 18-gauge (1.2mm) door fitted with tumbler lock. Towels are dispensed when lower bar is pushed.

TOWEL CAPACITY: 7 3/4" to 8" W (197 to 203mm), up to 8" (203mm) in dia.

OVERALL SIZE: 4" W, 27 1/2" H, 9 3/8" D (101 x 698 x 238mm) without frame

TD-12RPT

SEMI-RECESSED AUTOMATIC ROLL TOWEL DISPENSER



Satin-finish stainless steel, one-piece 18-gauge (1.2mm) door fitted with tumbler lock.

TOWEL CAPACITY: 7 3/4" to 8" W (197 to 203mm), up to 8" (203mm) in dia. 1 1/2" to 2" (38 to 51mm) core

OVERALL SIZE: 15 1/2" W, 27 1/2" H, 9 3/4" D (393 x 698 x 248mm) without flange

WR-2

SURFACE-MOUNTED WASTE RECEPTACLE



Satin-finish stainless steel, 22-gauge (0.8mm) waste receptacle. Edges hemmed for safety.

CAPACITY: 7-gal. (26.5-L)

OVERALL SIZE: 16 1/2" W, 23" H, 12 1/2" D (435 x 778 x 102mm)

WR-1 CAPACITY: 21-gal. (79.5-L)

WR-3 CAPACITY: 2-gal. (7.6-L)

WR-14 CAPACITY: 12-gal. (45.4 L)

Note: WR-1/WR-2 with vinyl liner

WR-6

RECESSED WASTE RECEPTACLE



Satin-finish stainless steel, one-piece 22-gauge (0.8mm) flange and removable waste receptacle. Receptacle projects 5" (127mm).

CAPACITY: 12-gal. (45.4-L)

OVERALL SIZE: 17 1/8" W, 30 5/8" H (435 x 778mm)

WR-6-18 18-gal. (68-L) waste receptacle

WR-6-6 Requires 6" (152mm) wall depth

WR-15

RECESSED COVERALL WASTE RECEPTACLE



Satin-finish stainless steel, one-piece 18-gauge (1.2mm) door fitted with tumbler locks. Removable, molded plastic waste receptacle.

CAPACITY: 12-gal. (45.4-L)

OVERALL SIZE: 17 3/16" W, 40" H, 7 1/2" D (436 x 101 x 190mm)

WR-11

FLOOR STANDING SWING-TOP WASTE RECEPTACLE



Satin-finish stainless steel 20-gauge (0.89mm) receptacle. Self-closing doors. Rubber feet provided.

CAPACITY: 13-gal.(49.2-L)

OVERALL SIZE: 12 1/2" W, 29 1/2" H, 12 1/2" D (318 x 749 x 318mm)

WR-12 CAPACITY: 21-gal. (79.5-L)

OPTION: -NT for waste receptacle without top

Hand Dryers

DR-5128

SURFACE-MOUNTED ADA COMPLIANT HAND DRYER



Brushed stainless steel cover with SteriTouch® antimicrobial additive. No-touch operation. cETLus approved.

UNIVERSAL VOLTAGE: 110-120/208/220-240 VAC input

OVERALL SIZE: 11 7/16" W, 10 11/16" H, 3 15/16" D (290 x 271 x 100mm)

DR-5120 White epoxy painted cover

SteriTouch is a registered trademark of SteriTouch Ltd.

DR-570

SURFACE-MOUNTED HIGH-SPEED HAND DRYER



White epoxy painted cover. No-touch operation. Motor delivers 105 cubic feet per air volume at 206 MPH. cULus, Greenspec listed.

VOLTAGE: DR-570 115V AC, 9.6 Amp, 50/60 Hz, or DR-570 230V AC, 4.8 Amp, 50/60 Hz

OVERALL SIZE: 8 9/10" W, 10 7/10" H, 6 1/2" D (226 x 271 x 165mm)

DR-578 115V or DR-578 230V Stainless brushed cover

OPTION:

KJR-973K-1 Recess Kit

DR-510

SURFACE-MOUNTED ADA COMPLIANT HAND DRYER



One-piece, aluminum die-casting with white epoxy enamel finish. cULus listed. Motor delivers 105 cubic feet per air volume at 206 MPH.

UNIVERSAL VOLTAGE: 110-120/208/220-240 VAC input

OVERALL SIZE: 9" W, 9 7/10" H, 4" D (229 x 247 x 102mm)

DR-5708

SURFACE-MOUNTED CAST IRON HAND DRYER



1/4" thick cast iron with porcelain enamel finish. Nozzle is constructed of die-cast alloy finished in bright chrome. cULus listed.

VOLTAGE: 115V AC, 9.6 Amp, 60 Hz

OVERALL SIZE: 9.25" W, 9 1/2" H, 8.33" D (235x 241 x 212mm)

DR-5750 115V Recessed

A-SERIES WELDED-FRAME



Satin-finish stainless steel. Corners welded, ground and polished smooth.

STANDARD SIZES/MODEL NUMBERS:
IS A-18 x 30, **IS** A-18 x 36, **IS** A-24 x 36, A-24 x 48, A-24 x 60, A-24 x 72

Max. one-piece mirror is 96" x 48" any direction, custom sizes available

OPTIONS:

- T** For tempered glass
 - L** For laminated glass
 - SS** For polished stainless steel;
- MS-18 & MS-24 Mirror Shelf available for A, C, FT-Series & AT-18 x 30 mirrors

C-SERIES CHANNEL-FRAME



Bright-polished stainless steel finish. Mitered corners

STANDARD SIZES/MODEL NUMBERS:
 C-18 x 24, **IS** C-18 x 30, **IS** C-18 x 36, **IS** C-24 x 36, C-24 x 48

Max. one-piece mirror is 96" x 48" any direction, custom sizes available

OPTIONS:

- T** For tempered glass
 - L** For laminated glass
 - SS** For polished stainless steel;
- MS-18 & MS-24 Mirror Shelf available for A, C, FT-Series & AT-18 x 30 mirrors

MS-18 MIRROR SHELF



Satin-finish stainless steel. Mirror shelf is 18" L, 1 1/4" H (457 x 32mm), ADA-compliant, protrudes 4" (100mm) from wall.

MS-24 **IS** 24" L, 1 1/4" H (610 x 32mm)

Special-order sizes: up to 60" (1525mm) are available on request

Shelves over 36" (914mm) long supplied with center support.

AT-18 x 30 ADJUSTABLE TILT



Satin-finish stainless steel. Corners welded, ground and polished smooth. Top of mirror extends 9" max. (229mm) from wall.

OPTIONS:

- T** For tempered glass
 - L** For laminated glass
 - SS** For polished stainless steel;
- MS-18 & MS-24 Mirror Shelf available for A, C, FT-Series & AT-18 x 30 mirrors

FT-SERIES FIXED-TILT POSITION



Satin-finish stainless steel frame. Corners welded, ground and polished smooth.

STANDARD SIZES/MODEL NUMBERS:
IS FT-18 x 30, **IS** FT-18 x 36, FT-24 x 36

OPTIONS:

- T** For tempered glass
 - L** For laminated glass
 - SS** For polished stainless steel;
- MS-18 & MS-24 Mirror Shelf available for A, C, FT-Series & AT-18 x 30 mirrors

M-SERIES FRAMELESS



20-gauge (1mm) stainless steel with bright-annealed finish. Back panel 1/4" (6mm) return edge for rigidity, and backing material 1/4" (6mm) thick.

STANDARD SIZES/MODEL NUMBERS:
 M-16 x 20, M-16 x 24, M-18 x 24, M-18 x 30, M-18 x 36, M-24 x 30, M-24 x 36

— Toilet Tissue Dispensers

TTD-5

SURFACE-MOUNTED MULTI-ROLL TOILET TISSUE DISPENSER



Satin-finish stainless steel. Extra toilet tissue roll automatically drops in place after bottom roll is depleted.

CAPACITY: Two rolls up to 5 1/4" (135mm) dia.

OVERALL SIZE: 5 3/4" W, 10 3/4" H, 6" D (146 x 273 x 152mm)

TTD-6 Recessed, 7 9/16" W, 12 1/2" H (190 x 320mm), projects 2 15/16" (75mm)

TTD-9

RECESSED COVERALL MULTI-ROLL TOILET TISSUE DISPENSER



Satin-finish stainless steel, one-piece 18-gauge (1.2mm) door fitted with tumbler lock. Spindle is continuous 1" (25mm) diameter 18-gauge (1.2mm) stainless steel tubing with plastic end caps.

CAPACITY: Two rolls up to 5 1/4" (135mm) dia.

OVERALL SIZE: 3 3/4" W, 8 1/2" H, 4 1/2" D (349 x 216 x 114mm)

TTD-13

SURFACE-MOUNTED JUMBO TOILET TISSUE DISPENSER



Satin-finish stainless steel. 22-gauge (0.8mm). Slot on front reveals tissue supply.

CAPACITY: One roll up to 9 3/8" (238mm) dia. 4" (102mm) wide

OVERALL SIZE: 10 1/2" W, 4 1/2" D (267 x 114mm)

TTD-14 Similar to TTD 13, 13" (330mm) dia. toilet tissue roll

TTD-11

SURFACE-MOUNTED JUMBO-ROLL TOILET TISSUE DISPENSER



Satin-finish stainless steel, 20-gauge (0.89mm). Sliding panel exposes one roll at a time and allows for easy roll changeover.

CAPACITY: Two rolls up to 9" (289mm)

OVERALL SIZE: 19 3/16" W, 10 3/8" H, 5 1/4" D (487 x 264 x 133mm)

23

TOILET TISSUE HOLDER



Bright-polished chrome-plated steel. Theft-resistant locking device.

CAPACITY: Two rolls up to 5" (127mm) dia.

OVERALL SIZE: 2 3/4" H, 6" W, 4 1/4" D (314 x 70 x 108mm)

22 Single-roll toilet tissue

212

RECESSED TOILET TISSUE HOLDER



Bright-polished stainless steel chrome roller.

CAPACITY: One roll up to 5-1/4" (133mm) dia.

OVERALL SIZE: 6 3/8" W, 6 3/8" H, 1 7/8" D (162 x 162 x 48mm)

212-DBL Bright-polished double-roll

212-SF Satin-finish single-roll

212-SF DBL Satin-finish double-roll

761

**SINGLE-ROLL
TOILET TISSUE
HOLDER**



Bright-polished, chrome-plated steel. Theft-resistant locking device.

CAPACITY: Two rolls up to 5 1/4" (1337mm) dia.

PROJECTS: 3 1/4" (83mm) from wall

OVERALL SIZE: 7 7/8" W, 1 15/16" H (200 x 49mm)

830

**DOUBLE-ROLL
TOILET TISSUE
HOLDER**



Bright-polished, chrome-plated Zamak. Push button unlocks support arms to allow servicing of unit.

CAPACITY: One roll up to 5 1/4" (133mm) dia.

OVERALL SIZE: 10 1/2" W, 2 3/8" H, 4 1/4" D (266 x 60 x 108mm)

815 Surface-mounted single-roll toilet tissue holder

TTD-2

**DOUBLE-ROLL
TOILET TISSUE
HOLDER**



Satin-finish stainless steel, 12-gauge (3mm). Cast aluminum spindles with locking pin. Controlled delivery.

CAPACITY: Two rolls up to 5 1/2" (140mm) dia.

OVERALL SIZE: 13" W, 2" H, 3 1/2" D (330 x 89 x 100mm)

TTD-1 Surface-mounted single-roll toilet tissue holder

7685

**SINGLE-ROLL
TOILET TISSUE
HOLDER**



Bright-polished stainless steel. Chrome-plated plastic spindle.

CAPACITY: One roll up to 5 1/2" (140mm) dia.

OVERALL SIZE: 7 1/4" W, 2" H (185 x 50mm)

PROJECTS: 3 15/16" (100mm) from wall

76857 Satin-finish **IS**

7686 Double-roll, bright-finish

76867 Double-roll, satin-finish **IS**

814NRC

**DOUBLE-ROLL
TOILET TISSUE
HOLDER
WITH NO ROLL
CONTROL**



Die cast aluminum. Theft-resistant locking device. Spindle fabricated of grey polystyrene.

CAPACITY: Two rolls up to 5 1/4" (135mm) dia.

OVERALL SIZE: 13 1/8" W, 1 3/4" H, 4 1/4" D (333 x 44 x 108mm)

813NRC Surface-mounted single-roll toilet tissue holder with no roll control

813 Surface-mounted single-roll toilet tissue holder

814 Surface-mounted double-roll toilet tissue holder

816

**SINGLE-ROLL
HEAVY DUTY
TOILET TISSUE
HOLDER**



1/8" (3.2mm) thick aluminum.

CAPACITY: One roll up to 5 1/4" (135mm) dia.

OVERALL SIZE: 5 1/8" W, 2" H, 3 1/8" D (130 x 51 x 79mm)

Grab Bars

EXPOSED FLANGE



- 10-gauge (3mm), stainless steel, 3" (76mm) dia. with 3 countersunk mounting holes.
- Available for 1 1/4" and 1 1/2" diameter bars.
- To specify: Series, E (Exposed) x grab bar length, e.g., 125E x 36

CONCEALED FLANGE



- 1/2" (13mm) deep, 11-gauge (1.24mm) stainless steel, 3" (76mm) dia. furnished with 3 stainless steel set screws and one back plate.
- Available for 1 1/4" and 1 1/2" diameter bars.
- To specify: Series, C (Concealed) x grab bar length, e.g., 150C x 36

SNAP FLANGE



- Mounting plate is 11 gauge (3mm), stainless steel, 3" (76mm) dia. Snap flange cover is 22-gauge (0.8mm) stainless steel.
- Available for 1", 1 1/4" and 1 1/2" diameter bars.
- To specify: Series, S (Snap) x grab bar length, e.g., 150S x 36

100 SERIES STRAIGHT GRAB BAR



- 18-gauge (1.2mm), satin-finish stainless steel tubing. Custom sizes available.
 BAR DIA.: 1" (25mm)
 STANDARD LENGTHS: 18", 24", (455, 610mm)
 FLANGE STYLES: Snap
 OPTION:
 -T For non-slip safety-textured grip

125 SERIES STRAIGHT GRAB BAR



- 18-gauge (1.2mm), satin-finish stainless steel tubing. Custom sizes available.
 BAR DIA.: 1 1/4" (32mm)
 STANDARD LENGTHS: 12", 18", 24", 30", 36", 42", 48" (305, 455, 610, 760, 915, 1060, 1220mm)
 FLANGE STYLES: Exposed, IS Snap
 OPTION:
 -T For non-slip safety-textured grip

150 SERIES STRAIGHT GRAB BAR



- 18-gauge (1.2mm), satin-finish stainless steel tubing. Custom sizes available.
 BAR DIA.: 1 1/2" (38mm)
 STANDARD LENGTHS: 12", IS 18", IS 24", 30", IS 36", IS 42", 48" (305, 455, 610, 760, 915, 1060, 1220mm)
 FLANGE STYLES: Concealed, Snap
 OPTION:
 -T For non-slip safety-textured grip

125 SWING-UP



- 18-gauge (1.2mm), satin-finish stainless steel tubing.
 OVERALL LENGTH: 29 15/16" D, 11 13/16" H (760 x 300mm)
 BAR DIA.: 1 1/4" (32mm)

125 SWING-UP-TPH



- 18-gauge (1.2mm), satin-finish stainless steel tubing. With toilet tissue holder.
 OVERALL LENGTH: 29 15/16" D, 11 13/16" H (760 x 300mm)
 BAR DIA.: 1 1/4" (32mm)

-50 SERIES

TWO WAY
WHEELCHAIR BAR



Standard dimensions: 36" W x 54" D (91 x 137cm), 18-gauge (1.2mm), satin-finish stainless steel tubing. Custom sizes available.

BAR DIA.:

-125 SERIES 1 1/4" (32mm)

-150 SERIES 1 1/2" (38mm)

MODEL NUMBERS: 125S-50, 150S-50

-40 SERIES

U SHAPED
SHOWER BAR



Standard dimensions: 32" W x 36" D x 32" W (81 x 91 x 81cm), 18-gauge (1.2mm), satin-finish stainless steel tubing. Custom sizes available.

BAR DIA.:

-125 SERIES 1 1/4" (32mm)

-150 SERIES 1 1/2" (38mm)

MODEL NUMBERS: 125S-40, 150S-40

-5 SERIES

90 DEGREE ANGLE

LEFT or
RIGHT



Standard dimensions: 16" W x 32" D (41 x 81cm), left or right configuration. 18-gauge (1.2mm), satin-finish stainless steel tubing. Custom sizes available.

BAR DIA.:

-125 SERIES 1 1/4" (32mm)

-150 SERIES 1 1/2" (38mm)

MODEL NUMBERS: 125S-5L, 125S-5R, 150S-5L, 150S-5R

-12 SERIES

HORIZONTAL TUB OR SHOWER



Standard dimensions: 15 7/8" W, 30 7/8" D (403 x 784mm). 18-gauge (1.2mm), satin-finish stainless steel tubing. Custom sizes available.

BAR DIA.:

-125 SERIES 1 1/4" (32mm)

-150 SERIES 1 1/2" (38mm)

MODEL NUMBERS: 125S-12, 150S-12

-60 & -60S SERIES

WALL TO FLOOR



Standard dimensions: 30" W x 33" D (76 x 84cm). 18-gauge (1.2mm), satin-finish stainless steel tubing. Custom sizes available.

BAR DIA.:

-125 SERIES 1 1/4" (32mm)

-150 SERIES 1 1/2" (38mm)

MODEL NUMBERS: 125S-60, 150S-60, 125S-60S, 150S-60S

-75 SERIES

WALL TO FLOOR

LEFT or
RIGHT



Standard dimensions: 30" W x 3" D (762 x 76mm), left or right configuration. 18-gauge (1.2mm), satin-finish stainless steel tubing. Custom sizes available.

BAR DIA.:

-125 SERIES 1 1/4" (32mm)

-150 SERIES 1 1/2" (38mm)

MODEL NUMBERS: 150S-75L, 150S-75R

— Soap Dispensers —

G-16AP

SURFACE-MOUNTED SOAP DISPENSER



Satin-finish stainless steel. Tank-type soap dispenser with all-purpose valve. View level indicator. Hinged filler-top requires special key to open.

CAPACITY: 40-fl. oz. (1.2-L)

OVERALL SIZE: 4 3/4" W, 8 1/4" H, 3" D (120 x 210 x 76mm)

G-29L

COUNTER-MOUNTED SOAP DISPENSER



Chrome-plated brass. Polyethylene soap container with easy viewing of soap level.

CAPACITY: 21-fl. oz. (0.62-L)

G-58AP

SURFACE-MOUNTED HORIZONTAL SOAP DISPENSER



Satin-finish stainless steel. Tank-type soap dispenser with all-purpose valve. View level indicator. Hinged filler-top requires special key to open.

CAPACITY: 40-fl. oz. (1.2-L)

OVERALL SIZE: 8 1/4" W, 4 3/4" H, 3" D (210 x 121 x 76mm)

G-63SD

COUNTER-MOUNTED AUTOMATIC SOAP DISPENSER



Chrome-plated stainless steel spout assembly with sensor housing. May be mounted on left or right side of the sink. Designed with a push button release for filling soap bottle.

CAPACITY: 54-fl. oz. (1600 ml)

G-64LB

COUNTER-MOUNTED SOAP DISPENSER



Chrome-plated brass. Polyethylene soap container with easy viewing of soap level. Top fill for convenience.

CAPACITY: 32-fl. oz. (0.9-L)

G-64LB-6 6" (152mm) spout

G-64LB-US-3 4" (102mm) spout, bright-polished brass finish

G-64LB-6-US-3 6" (152mm) spout, bright-polished brass finish

G-950SA

SURFACE-MOUNTED AUTOMATIC SOAP DISPENSER



Satin-finish stainless steel. Dispenses a variety of liquid soaps and disinfectants. 950FA dispenses a variety of foam soaps. Lockable housing is equipped with clear acrylic refill-indicator window and hinged for refilling and maintenance. CE certified.

CAPACITY: 30-fl. oz. (850 ml)

OVERALL SIZE: 4 3/16" W, 9 9/16" H, 4 7/32" D (435 x 780 x 102mm)

G-950FA Foam soap dispenser

Seat Cover Dispensers

TSC-1

SURFACE-MOUNTED TOILET SEAT-COVER DISPENSER



Satin-finish stainless steel, 22-gauge (0.8mm). Fills from the bottom through concealed opening.

CAPACITY: Dispenses 250 single- or half-fold covers

OVERALL SIZE: 15 3/4" W, 11" H, 2" D (400 x 279 x 51mm)

TSC-2

RECESSED TOILET SEAT-COVER DISPENSER



Satin-finish stainless steel, 22-gauge (0.8mm).

CAPACITY: 500 covers

OVERALL SIZE: 17 1/8" W, 12 3/4" H, 2 1/4" D (435 x 324 x 57mm)

TSC-8

RECESSED COVERALL TOILET SEAT-COVER DISPENSER



Satin-finish stainless steel, one-piece 18-gauge (1.2mm) door fitted with tumbler lock.

CAPACITY: 500 covers

OVERALL SIZE: 16 3/4" W, 12 3/4" H, 2 3/8" D (425 x 324 x 60mm)

Partition-Mounted Units

TSC-5

RECESSED TOILET SEAT-COVER, TISSUE DISPENSER & NAPKIN DISPOSAL



Satin-finish stainless steel.

DISPOSAL CAPACITY: 0.8-gal. (3.0-L)

SEAT-COVER CAPACITY: 500 covers

TOILET TISSUE CAPACITY: Two rolls up to 5 1/4" (133mm) dia.

OVERALL SIZE: 17 3/16" W, 30 5/8" H, 4" min. D (435 x 780 x 102mm)

TSC-5FS Surface-mounted 4" (102mm) skirt

TSC-5P Serves two compartments

TSC-5PH Serves two compartments, one side mounts flush to partition

TSC-6

RECESSED TOILET SEAT-COVER & TISSUE DISPENSER



Satin-finish stainless steel.

SEAT COVER CAPACITY: 500 covers

TOILET TISSUE CAPACITY: Two rolls up to 5 1/4" (133mm) dia.

OVERALL SIZE: 17 3/16" W, 30 5/8" H, 4" min. D (435 x 780 x 102mm)

TSC-6FS Surface-mounted 4" (102mm) skirt

TSC-6P Serves two compartments

TSC-6PH Serves two compartments, one side mounts flush to partition

TSC-7

RECESSED TOILET TISSUE DISPENSER & SANITARY NAPKIN DISPOSAL



Satin-finish stainless steel, 22-gauge (0.8mm). Receptacle slides out for servicing.

TOILET TISSUE CAPACITY: Two rolls up to 5 1/4" (135mm) dia.

DISPOSAL CAPACITY: 3/4-gal. (2.8-L)

OVERALL SIZE: 17 3/16" W, 12 3/4" H, 4 1/4" D (436 x 324 x 107mm)

Feminine Hygiene Accessories

282 25

SURFACE-MOUNTED NAPKIN-TAMPON VENDOR



Satin-finish stainless steel. Single-coin mechanism for 25¢ operation. 18-gauge (1.2mm) door. Separate lock and key for coin box.

CAPACITY: 30 Napkins, 27 Tampons

OVERALL SIZE: 11 7/8" W, 25 7/8" H, 6 1/2" D (300 x 655 x 165mm)

352 25 Recessed 13 7/8" W, 27 7/8" H, 4" to 6 1/2" D (350 x 710 x 100 to 165mm)

NV-2-4

RECESSED COVERALL NAPKIN-TAMPON VENDOR



Satin-finish stainless steel, one-piece, 18-gauge (1.2mm) door with two tumbler locks. Single-coin mechanism for 25¢ operation.

CAPACITY: 15 Napkins, 27 Tampons

OVERALL SIZE: 16 7/8" W, 27 9/16" H, 4 5/8" min. D (429 x 700 x 117mm)

NV-2-4FS Surface-mounted with 4" (102mm) skirt.

ND-1

SURFACE-MOUNTED SANITARY NAPKIN DISPOSAL



Satin-finish stainless steel, 22-gauge (0.8mm).

CAPACITY: 1.0-gal. (3.8 L)

OVERALL SIZE: 7 1/2" W, 10" H, 3 3/16" D (190 x 255 x 81mm)

ND-3

RECESSED COVERALL SANITARY NAPKIN DISPOSAL



Satin-finish stainless steel, one-piece 18-gauge (1.2mm) door with stainless steel handle. Stainless steel waste receptacle mounts on front door and lifts out for servicing.

CAPACITY: 0.6-gal. (2.3 L)

OVERALL SIZE: 8" W, 14" H, 4 1/4" D (203 x 356 x 108mm)

ND-4

RECESSED SANITARY NAPKIN DISPOSAL



Satin-finish stainless steel, 22-gauge (0.8mm) flange, and door. Self-closing panel covers disposal opening. Removable, molded polyethylene waste receptacle.

CAPACITY: 1.2-gal. (4.6-L)

OVERALL SIZE: 12 3/4" W, 17 3/32" H, 3 15/16" min. D (324 x 434 x 100mm)

ND-6 Partition-mounted sanitary napkin disposal

ND-5

SURFACE-MOUNTED COVERALL SANITARY NAPKIN DISPOSAL



Satin-finish stainless steel. Door has tumbler lock. Door has tumbler lock. Self-closing panel covers disposal opening. Removable, leak-proof, plastic receptacle.

CAPACITY: 1.2-gal. (4.6-L)

OVERALL SIZE: 10 11/16" W, 15 1/8" H, 4 1/16" D (270 x 385 x 105mm).

5181 FOLDING SOLID PHENOLIC REVERSIBLE SHOWER SEAT



Seat is constructed of durable, water-resistant, ivory-colored 1/2" (13mm) thick solid phenolic. Reversible for left- or right-hand field installation.

OVERALL SIZE: Ht.: 17-19" (432-483mm) from top of seat to floor

SEAT: 33" W (840mm)

PROJECTS: 22 5/16" (565mm) from wall

5191 FOLDING SOLID PHENOLIC SHOWER SEAT



Seat is constructed of durable, water-resistant, ivory-colored 5/16" (8mm) thick solid phenolic. Compact design.

OVERALL SIZE: Ht.: 17-19" (432-483mm) from top of seat to floor

SEAT: 18" W (455mm)

PROJECTS: 15 13/16" (400mm) from wall

100 SERIES SHOWER CURTAINS



Opaque, matte white vinyl; Contains Sure-Check® Linen Antimicrobial Fabric Protection. Meets federal specifications.

100SC-42 x 72 Curtain 42" W, 72" H (1065 x 1830mm), requires 8 hooks

100SC-72 x 72 Curtain 72" W, 72" H (1830 x 1830mm), requires 13 hooks

Sure-Check is a Registered Trademark of PAR Technology Corporation.

SR100E SR125E EXPOSED MOUNTING SHOWER CURTAIN ROD



Curtain rod constructed of 18-gauge (1.2mm), satin-finish stainless steel. One-piece exposed flange constructed of 20-gauge (.90mm) stainless steel.

BAR DIA.: 1" (25mm), 1 1/4" (32mm)

STANDARD LENGTHS: 36", 42", 48", 60", 72" (914, 1067, 1219, 1524, 1829mm)

SR100C SR125C CONCEALED MOUNTING SHOWER CURTAIN ROD



Curtain rod constructed of 18-gauge (1.2mm), satin-finish stainless steel. One-piece concealed flange constructed of 20-gauge (.90mm) stainless steel.

BAR DIA.: 1" (25mm), 1 1/4" (32mm)

STANDARD LENGTHS: 36", 42", 48", 60", 72" (914, 1067, 1219, 1524, 1829mm)

SR100SQ SR125SQ SQUARE MOUNTING SHOWER CURTAIN ROD



Curtain rod constructed of 18-gauge (1.2mm), satin-finish stainless steel. One-piece square flange constructed of 22-gauge (.74mm) stainless steel.

BAR DIA.: 1" (25mm), 1 1/4" (32mm)

STANDARD LENGTHS: 36", 42", 48", 60", 72" (914, 1067, 1219, 1524, 1829mm)

100 SERIES SHOWER CURTAIN HOOKS



For use on 1" and 1 1/4" (25 and 32mm) dia. shower curtain rods.

OVERALL SIZE: 2 5/8" H, 1 11/32" W (67 x 34mm)

100CH Chrome-plated steel. Hook is 2 5/8" H, 1 11/32" W (67 x 34mm)

100CHNR Chrome-plated steel with nylon rollers

100CHSS Stainless Steel **IS**

7673 TOWEL BARS



Bright-polished 22-gauge (0.8mm) stainless steel square tubing.

PROJECTS: 3 1/2" (89mm) from wall

OVERALL SIZES:

7673 X 18 18" (457mm) bar length

7673 X 24 24" (610mm) bar length **IS**

76737 X 18 Satin finish, 18" (457mm) bar length

76737 X 24 Satin-finish, 24" (610mm) bar length **IS**

7680 SOAP DISH



Bright-polished stainless steel. Surface-mounted soap dish has two drain holes and two soap-support ridges.

OVERALL SIZE: 4 1/2" W (115mm)

PROJECTS: 3 3/4" (95mm) from wall

OPTION:

76807 Satin-finish stainless steel **IS**

— Healthcare & Security Accessories —

SPB-1

SPECIMEN
PASS-THRU
CABINET



Satin-finish stainless steel. Self-closing doors provided with a pull knob. Removable tray provided.

OVERALL SIZE: 13 1/2" W, 12 7/8" H, 6" D (343 x 327 x 152mm)

Wall Thickness: 1 3/4" to 5 1/2" (10 to 140mm)

BP-1

SURFACE-
MOUNTED
BED PAN
RACK



Satin-finish stainless steel, 18-gauge (1.2mm).

OVERALL SIZE: 11" W, 24" H (279 x 610mm)

PROJECTS: 4 5/8" (117mm) from wall

MC-1

RECESSED
MEDICINE
CABINET



Recessed cabinet. Door has magnetic door catch and stainless steel door stop. Cabinet inverted for right- or left-hand door swing.

OVERALL SIZE: 16 3/8" W, 26 3/8" H, 4 5/16" D (416 x 660 x 109mm)

MC-2 Surface-mounted 4" (102mm) skirt

BP-2

RECESSED
BED PAN
CABINET



Satin-finish stainless steel, 18-gauge (1.2mm) door. Stainless steel rod to hold one bed pan and one urinal in place furnished.

OVERALL SIZE: 15" W, 28" H, 5" D (381 x 711 x 127mm)

CG-2

SERIES
CORNER
GUARD



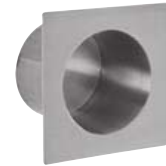
Satin-finish stainless steel, 18-gauge (1.2mm). Units have 90° angle with 1/8" (3mm) radius. Custom sizes and styles available.

OVERALL SIZE: 1 1/2" W, 48" H, 1 1/2" D (29 x 1219 x 38mm)

CG-4 3 1/2" W, 48" H, 3 1/2" D (89 x 1219 x 89mm)

MSA-1

RECESSED
MAXIMUM
SECURITY
TOILET PAPER
HOLDER



Satin-finish stainless steel, 14-gauge (1.9mm).

CAPACITY: One standard toilet tissue roll

OVERALL SIZE: 7 1/16" W, 7 1/16" H, 4 3/8" D (179 x 179 x 111mm)

MSA-11

MAXIMUM
SECURITY
FRAMED
MIRROR



Frame is 14-gauge (1.9mm) satin-finish stainless steel. Mirror is type 430 bright-polished stainless steel. Corners are welded and ground smooth.

OVERALL SIZE: 12" W, 16" H, 5/8" D (309 x 406 x 16mm) overall

OPTIONS: Other reflective surfaces available

MSA-18

MAXIMUM
SECURITY
CLOTHES
HOOK



Satin-finish stainless steel. Snaps down for safety when loaded with 8 lbs of pressure.

OVERALL SIZE: 1 1/2" W, 3 3/8" H (38 x 86mm)

PROJECTS: 1 3/8" (35mm) from wall

MSA-25 4" W, 4" H, 7/8" D (100 x 100 x 20mm); projects 1 1/4" (30mm) from back plate

MSA-14

MAXIMUM SECURITY
GRAB BAR



12-gauge (2mm) satin-finish stainless steel. Closure plate welded to grab bar. BAR DIA.: 1 1/2" (38mm)

STANDARD LENGTH: 24" (610mm)

FLANGE STYLES: Exposed

Note: Other lengths are available 1 1/2" (38mm) dia. exposed flange only.

Restroom Accessories

S-8 SERIES

STAINLESS STEEL SHELF



Satin-finish stainless steel, 18-gauge (1.2mm), 8" (203mm) depth.

SHELF LENGTHS: 18", 24", 36" (457, 610, 914mm)

S-5 SERIES 5" D (127mm). Lengths: 16", 18" (406, 457mm)

S-6 SERIES 6" D (152mm). Lengths: 16", 18", 24", 36" (406, 457, 610, 914mm)

BCS-1

SURFACE-MOUNTED BABY CHANGING STATION



IS

Cream-color polypropylene cabinet and bed. Reinforced full-length steel-on-steel hinge mechanism.

OVERALL SIZE: Closed - 35 1/4" W, 20" H, 4" D (895 x 508 x 100mm)

Extension open - 19" (483mm)

BCS-2 Similar to BCS-1 in Grey IS

287

FOLD-DOWN SHELF



Satin-finish stainless steel. Shelf holds 100 lbs (45.36 Kg) when properly installed, automatically returns to upright position when object is removed.

OVERALL SIZE: 5 13/16" W, 2 3/8" H, 14 9/16" D (150 x 60 x 370mm)

Custodial Accessories

SPH-2

SHELF WITH TOILET TISSUE DISPENSER



IS

Satin-finish stainless steel. 1/2" (13mm) return edges for maximum rigidity.

CAPACITY: Two rolls up to 5 1/2" (140mm) dia.

OVERALL SIZE: 16" W, 4" H, 5" min. D (406 x 110 x 127mm)

US-1

UTILITY SHELF WITH MOP/BROOM HOLDERS



IS

Satin-finish stainless steel. Spring-loaded rubber cam holders. Rod for hanging wet rags.

OVERALL SIZE: 7 1/2" H, 8" D (190 x 203mm); 30" L (762mm), 3 Holders, 2 Hooks

US-2 36" L (914mm), 4 Holders, 3 Hooks IS

MS-1

MOP STRIP



Mop holder with spring-loaded rubber cam holders. 24" (610mm) Mop Strip with 3 Holders

PROJECTS: 3-1/4" (83mm) from wall

MS-2 36" L (914mm) Mop Strip with 4 Holders IS

US-5

UTILITY SHELF



IS

Satin-finish stainless steel, 18-gauge (1.2mm). Spring-loaded rubber cam holders. Shelf above handle area provides clear access to stored materials.

OVERALL SIZE: 34" L, 8" D (864 x 203mm), 3 Holders, 4 Hooks

US-6 44" L (1118mm), 4 Holders, 5 Hooks

US-7 54" L (1372mm), 5 Holders, 6 Hooks

HCS-1

HAT & COAT STRIP



Satin-finish stainless steel, 20-gauge (0.89mm). 24" W (610mm) Strip, 3 Holders.

HCS-2 36" (914mm) Strip, 4 Holders

HCS-3 48" (1219mm) Strip, 5 Holders

7676 X 24

TOWEL BAR SHELF



Bright-polished stainless steel square tubes 3/8" (9.5mm) . 1/4" (6mm) square towel bar below shelf.

PROJECTS: 8 1/4" (210mm) from wall




76767 X 24 Similar to 7676 x 24 with satin-finish



Commercial Restroom Accessories
A Division of Bobrick

One Gamco Place, Durant, OK 74701-1910

For additional information, please visit www.gamcousa.com or contact Customer Service:

Los Angeles	 818.982.9600	 818.503.9287	 bobrickcustomerservice@bobrick.com
New York	518.877.7444	518.877.5029	bobrickcustomerservice@bobrick.com
International	+1.818.764.1000	+1.818.503.9941	international@bobrick.com